



Edith Corinne Willoughby

SEP 13, 1928 - NOV 24, 2015



Scan to Visit

Table of Contents

Obituary	Page 3
Events	Page 5
Tribute Wall	Page 6
Media	Page 12



Edith Corinne Willoughby

SEP 13, 1928 - NOV 24, 2015

Edith Corinne “Edie” Willoughby, 87, of Fredericksburg passed away peacefully on Tuesday, Nov. 24, 2015, surrounded by her family.

Edie was born Sept. 13, 1928, in Philadelphia, Pa., to Robert Lee Willoughby and Nan Toll Fyfe Willoughby. She was the sister of the late Nancy Lee Carroll and Donna Lynn Cramer.

A retired educator of 25 years for Prince George’s County elementary schools, Edie began her love of teaching in 1959. She attended State Teachers College at Towson University where she earned her Bachelor of Science degree before earning her Master of Arts in education from The George Washington University. Edie taught at the elementary level for seven years prior to being asked to become a principal at Langley Park Elementary in Hyattsville, Md. She retired from Paint Branch Elementary in College Park, Md., in June of 1986 to move to Fredericksburg to care for her youngest sister, Donna Lynn Cramer. Upon Donna’s death, Edie stepped in to raise her three children, Chad, Melissa and Kimberlee.

Edie was an avid Washington Redskins fan, card player, fisher, gardener, trumpet player, boater and member of Hillcrest United Methodist Church. However, her true passion was found in her family. When asked if she could go anywhere in the world, Edie would reply, “Wherever my family is.” Her greatest joy was helping and caring for others; she was the epitome of compassion.

She was preceded in death by her parents and her two sisters. She is survived by her “children,” Chad M. Cramer of Bluffton, S.C., and Missi Ferary and Kimberlee Foster (Nick), both of Fredericksburg; nieces Allyson Nickel of Dagsboro, Del., and Stephanie Boyle of Crofton, Md.; numerous cousins; 14 great-nieces and nephews; and four great-great nieces and nephews. To know her, was to love her and she will be missed dearly.

A celebration of her life will be held at 2 p.m. Saturday, Dec. 5, at Found and Sons Funeral Home–Cremation Service, 10719 Courthouse Road, Fredericksburg.



Obituary

Edith Corinne Willoughby

SEP 13, 1928 - NOV 24, 2015

In lieu of flowers and to honor Edie, the family requests that you perform an act of kindness to others.

To our Willa— “So long, with love... . We’ll be seeing you.”

Online condolences may be expressed to the family at foundandsons.com.




Events


Edith Corinne Willoughby

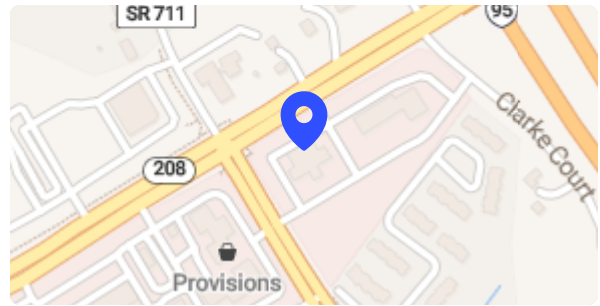
SEP 13, 1928 - NOV 24, 2015

Celebration

 **Saturday**, December 5, 2015

 2:00 PM ET

 **Found and Sons Funeral Chapel of
Fredericksburg**
10719 Courthouse Road, Fredericksburg VA
22407





Tribute Wall

Edith Corinne Willoughby

SEP 13, 1928 - NOV 24, 2015



Barbara Stein posted:

I have been retired from the Prince George's County school system for 5 years. I began my career mid-year, as a teacher on Ms Willoughby's staff. A replacement was needed for a teacher who was moving out of state. Thus, it was winter....I walked through the snow to Langley Park Elementary for my first interview, nervous as could be. Ms. Willoughby was so kind and pleasant and made me feel welcome. At the end of our chat, she said that anyone who hikes in the snow for an interview deserves to be hired. I spent quite a few years at her school which at the time only went up to the third grade. My 40 year career began with my first principal, Ms. Willoughby. She will always have a special place in my heart. I send my sympathy and comfort to her family at this time.

December 7 at 5:53 PM



Kimberlee Foster December 9 at 6:09 AM

Hi Barbara, I am in tears reading your post. Thank you so very much for sharing that story/memory with us. She adored her staff and students- her Langley Park family. She would be honored by your message. Thank you!



Marylouise J. Isbell, Pgpsra lit a candle in honor of Edith.



December 7 at 2:08 AM



Joan Wise posted:

I worked for Edie at Paint Branch Elem. She was always so kind to her teachers and was deeply missed when she retired. Her love for learning and her dedication to the students was one thing about her that I will always remember. My Deepest Sympathy, Joan Wise

December 6 at 2:08 PM



Kimberlee Foster December 9 at 6:13 AM

Hi Joan, I have the scrapbook that was put together by the Paint Branch PTA upon Edie's retirement; what a wonderful tribute! She deeply loved her staff, teachers, and students- her Paint Branch family. She would be honored by your message. Thank you very much for taking the time to share your message with us, I greatly appreciate it. Our Edie was one-of-a-kind! Thank you!



Tribute Wall

Edith Corinne Willoughby

SEP 13, 1928 - NOV 24, 2015

PF

Peggy Fahey posted:

We saw Edie's obituary in the Post and want to send our heartfelt condolences to her family. Our mother, Corinne Fyfe Rafferty, thought the world of Edie and we all remember her fondly. She was so much fun to be around and it was always a treat when she and Nan would come for a visit. Edie was a very special person and we treasure our memories of her. With Deepest Sympathy, Doug and Peggy (Rafferty) Fahey Joseph Rafferty, Jr. and Family

December 4 at 6:00 PM

KF

Kimberlee Foster December 9 at 6:15 AM

Thank you very much for taking the time to post this message in memory of Edie. She truly was a special person! Thank you!

KM

Keely Maitland lit a candle in honor of Edith.

I have many great memories of Edie! Every time I drive by her house in the old neighborhood I think of her and you guys. I grew up hanging out with Kimi & Missi and often times we were stirring up trouble down at Edie's. I remember feeling like Edie was the "adult" of all adults. She was stable and secure and whenever she watched us we could be as wild and free as we wanted and knew that we were safe and cared for. Of course if we started getting too wild she would let us know with a quickness! I know we drove her crazy sometimes but I know she enjoyed our silliness and absolutely adored her family. I remember her driving us to the park to feed ducks and I remember her taking us swimming so we could be mermaids. I have the most hilarious memory of rescuing a cat off Edie's porch that she was chasing with a broom. My family kept that mean old orange cat. She didn't mess around with cats! She was a woman of much wisdom and I feel lucky to have known her and she was a very positive influence in my life. I am thinking of you all and know that she has left a huge space in your hearts and lives. You have our deepest sympathies.



November 29 at 2:38 PM

KF

Kimberlee Foster December 9 at 6:16 AM

Ha! I remember that cat but totally forgot that story! Thanks, Keely for coming! And for all the years of memories. Xo



Tribute Wall

Edith Corinne Willoughby

SEP 13, 1928 - NOV 24, 2015



Rainbow Hopkins posted:

Unfortunately it has been years since I have seen Edie, but that doesn't mean she is not a large part of my childhood memories. So many memories with Missi and Kimi that Edie played a part in. She always made sure we were safe, one time she was so mad that we left the front door open when we were home alone that she yelled at us when she came in and I was so scared I ran all the way home! She was a protector but she loved us very much! I'm thankful for all the advice and many laughs we shared. I'd like to think we all gained another angel and Donna and Edie are watching over us together now. My thoughts are with you all. - Rainbow

December 2 at 1:26 PM



Your Scps Finance Team Family sent an Emerald Garden Basket to the Willoughby family.

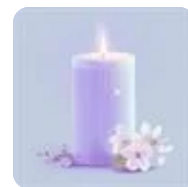


December 2 at 12:09 PM



Gail Dushane lit a candle in honor of Edith.

Such a kind soul, she will be forever in your hearts. My sincerest condolences to your entire family. Gail DuShane



December 1 at 11:50 AM



Madison Cramer posted:

Even though i didn't see you often you helped me out in ways you will never know. Wish I could have seen you towards the end. You will never be forgotten

December 1 at 8:32 AM



Virginia Patton lit a candle in honor of Edith.



December 1 at 1:59 AM

VP **Virginia Patton** December 1 at 1:59 AM
From the Kendall Clan



Tribute Wall

Edith Corinne Willoughby

SEP 13, 1928 - NOV 24, 2015



Dick & Jodi Fyfe posted:

Edie was such a very special cousin and we will always cherish the wonderful memories we have of her. Our deepest sympathy to all her special children and their families. xo Dick and Jodi Fyfe and family

November 30 at 11:49 AM



June posted:

Edie was a bright spirit in our lives. She always was good for a laugh. We have great memories of her. Love cousin June

November 30 at 8:19 AM



Lindsey Huffman posted:

If you ever had the privilege of meeting Edie you already know what a special person she truly was. I had so many great laughs and memories it's hard to pick just one! She would tell Kim and I the best stories and give us the best advice! I remember her sitting in her chair in the kitchen all hours of the night just gabbing away while Kim and I sat on the floor laughing and listening! What great memories she provided. I am thinking of you all during this difficult time and continuing to pray for your hearts to heal. Edie will always be watching over you!

November 30 at 7:25 AM



Fried Fron The 1940'S posted:

Remembering Jobs Daughters, Bethel 4 and our many visits to other chapters as we went through the process of becoming the Honored Queen. Peace to you.

November 30 at 5:36 AM

MF **Missi Ferary** November 30 at 8:35 AM

Hi friend! Thank you so much for sharing!! We had forgotten that she had taken part in those activities? If you have any more memories with her,we'd really love to hear them



Keri Matthews lit a candle in honor of Edith.



November 30 at 4:52 AM



Tribute Wall

Edith Corinne Willoughby

SEP 13, 1928 - NOV 24, 2015



Keri Matthews posted:

Edie was such a sweet woman and an amazing person. I know she will be forever loved and missed by you. Thinking of you and your family, Kim

November 30 at 4:52 AM



Kelly Mims posted:

She was truly a special woman. She left a place in my heart. I always enjoyed talking with her and always loved her laugh and smile. I will never forget her. I'll close with bye for now, with love. I'm gonna miss you Willoughby!!

November 29 at 3:27 PM



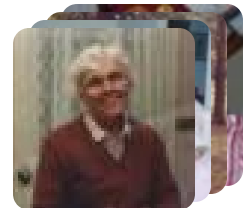
Diane posted:

Edie was an amazing woman and will certainly be missed! Thinking of you and your family Kim.

November 29 at 2:55 PM



Kim Foster shared an album called **Our Sweet Edie.**



November 29 at 2:38 PM



Mary Foster lit a candle in honor of Edith.



November 29 at 2:42 PM



Your Kimi lit a candle in honor of Edith.



November 29 at 2:39 PM



Tribute Wall

Edith Corinne Willoughby

SEP 13, 1928 - NOV 24, 2015



Your Kimi posted:

I know you are forever with me, but I just do not know how to do this without you. Please show me. So long for now, with love my sweet Willa. "I'll be looking at the moon but I'll be seeing you".

November 29 at 2:38 PM



Media

Edith Corinne Willoughby

SEP 13, 1928 - NOV 24, 2015



Kim Foster shared 21 photos to the **Our Sweet Edie** album.

November 29 at 2:46 PM



Kelly Mims November 29 at 3:20 PM

I love this one!!



Media

Edith Corinne Willoughby

SEP 13, 1928 - NOV 24, 2015



Sweet Willa



Media

Edith Corinne Willoughby

SEP 13, 1928 - NOV 24, 2015





Media

Edith Corinne Willoughby

SEP 13, 1928 - NOV 24, 2015





Media

Edith Corinne Willoughby

SEP 13, 1928 - NOV 24, 2015





Memories only last if you share them

Join us in honoring Edith by contributing to a collection of shared memories.



Scan to Visit